



36a & 36b Castlemaine Circuit Harrington Park NSW

6 3 3

This is a rare opportunity to acquire an as new home in the highly sought after Michelia precinct of Harrington Grove. Boasting a top location opposite natural bush lands. Enjoy the sounds of nature whilst you relax in this beautiful home built with an emphasis on comfortable living for any size family and all whilst your income from the granny flat takes care of the bills.

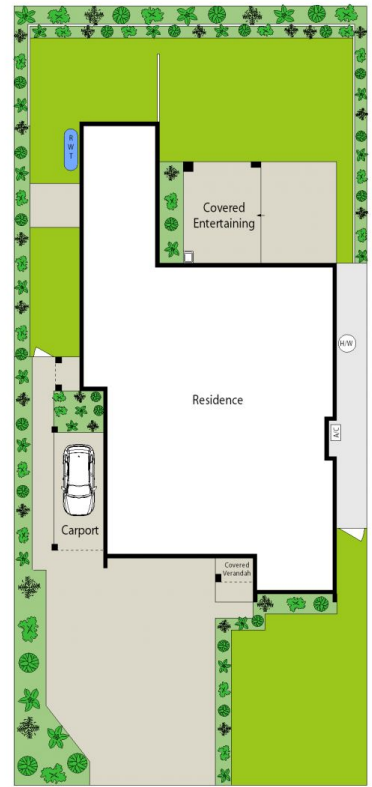
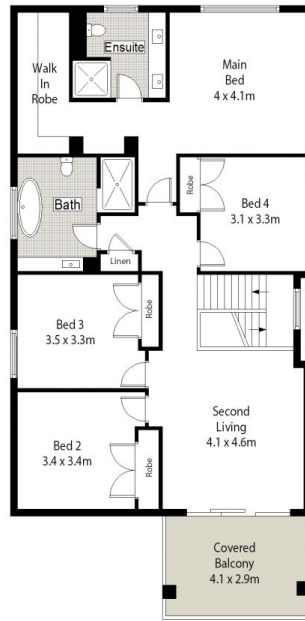
Additional features we like include:

- Large 5 bedroom home. 5th room on ground level
- Cosy, light filled home office, ideal for WFH occupations
- Large living & dining areas overlook alfresco & backyard
- Timber floorboards throughout, tiled bathrooms
- Master bedroom has a walk in robe, twin vanity ensuite
- Built ins to beds 2, 3 & 4 all good size rooms
- Additional upstairs lounge is great for teenagers
- Hostess kitchen, timber loom laminate with Ceasar-stone bench-tops, 900mm gas c/top, oven, dishwasher & butlers

Price : Contact Agent
Land Size : 702 sqm
View : <https://www.oaap.com.au/sale/nsw/macarthurcamden/harrington-park/residential/house/7990755>



Nick Alexopoulos
02 8123 0145



Scale in metres. Indicative only. Dimensions are approximate. All information contained herein is gathered from sources we believe to be reliable. However we cannot guarantee its accuracy and interested persons should rely on their own enquiries.



36 Castlemaine Circuit, Harrington Park

ONE AGENCY
ALEXOPOULOS PROPERTY