



## 99 Sweethaven Road Edensor Park NSW

3  1  1 

An exceptional opportunity to acquire a rare block of land. 883.8m2 with an 18m frontage and all of this within minutes of Stocklands Mall, Marconi Club, a selection of schools, parks & public thoroughfares. The existing house is recently vacated with scope for renovation. Room for a granny flat or further development subject to council approval.

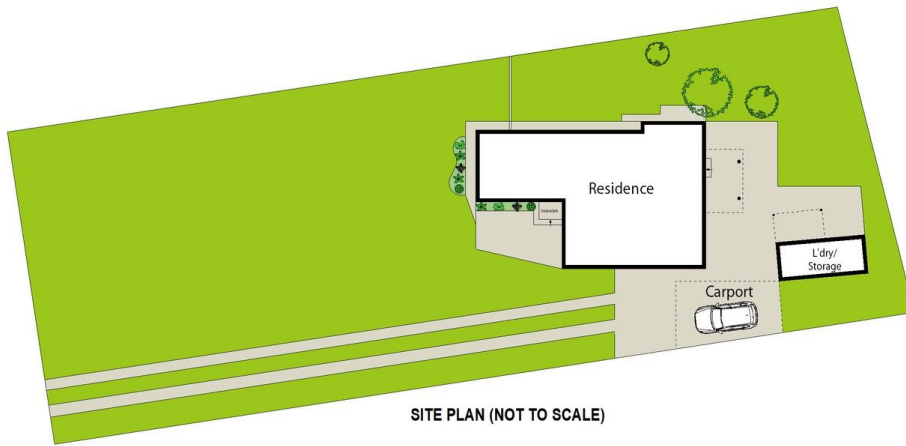
- 3 bedrooms
- 1 bathroom
- 1 carport
- 883.8m2
- 18m wide

A block of land as big as this is a rarity. Build your dream home & a granny flat as well or explore development opportunities with impending changes to development laws. Call Nick 0411320230 for an inspection or pop into one of our Open Homes for a look.

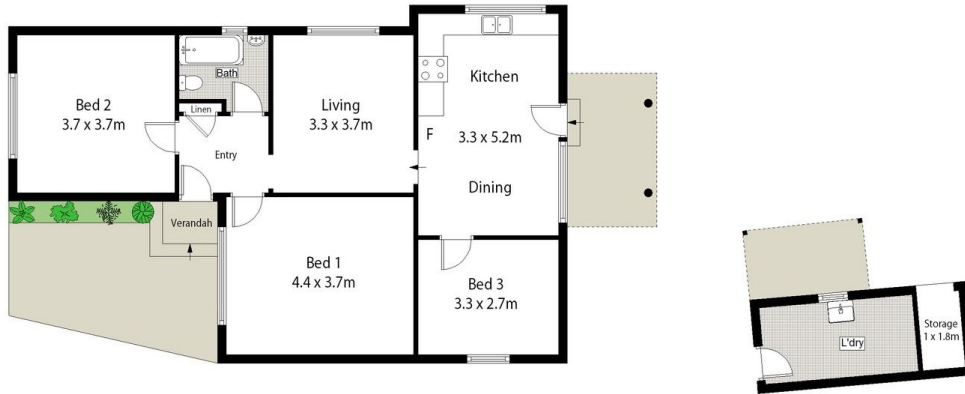
**Price** : SOLD  
**Land Size** : 884 sqm  
**View** : <https://www.oaap.com.au/sale/nsw/western-sydney/edensor-park/residential/land/7965566>



**Nick Alexopoulos**  
02 8123 0145



SITE PLAN (NOT TO SCALE)



0 1 2 3 4 5 SCALE (METRES)

Scale in metres. Indicative only. Dimensions are approximate. All information contained herein is gathered from sources we believe to be reliable. However we cannot guarantee its accuracy and interested persons should rely on their own enquiries.

99 Sweethaven Road, Edensor Park

