

52-56 Alaine Place Cecil Park NSW

8 5 5

Every now & then a home comes along that you know is going to be big enough. Take a look at this one. A combination of 8+ bedrooms, 5 bathrooms & lock up garaging for 5 cars, there is room for the biggest families and their friends as well.

Perfectly located only a 1 min drive access to the M7 motorway on a 2.5 acre parcel with all these features. Rarely will another home like this be available any time soon. This family has enjoyed it for the past 15 years but it's time to move on.

Main House

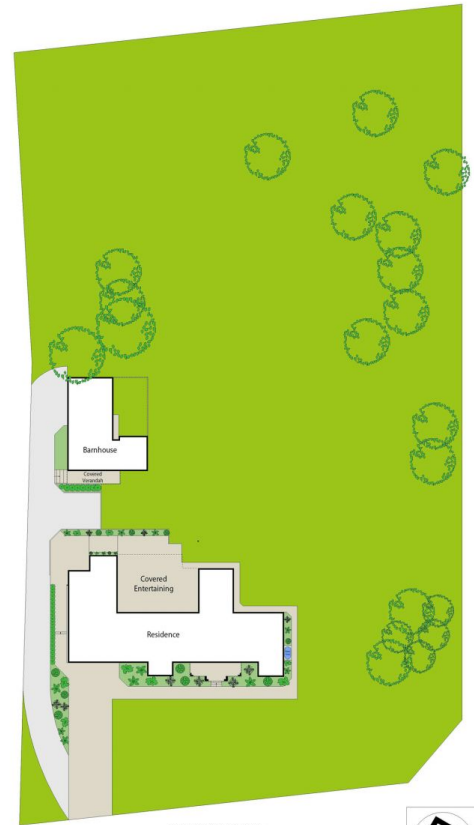
- 4 large bedrooms, built ins to all, rooms are all carpeted
- Master is huge with a walk in robe & an ensuite
- Multiple living areas, formal lounge, dining plus a rumpus room
- Raked ceilings to the living area
- Built in, in-law accommodation features a seperate entry,

Land Size : 2.5 Acres

View : <https://www.oaap.com.au/sale/nsw/western-sydney/cecil-park/residential/house/7677153>



Nick Alexopoulos
02 8123 0145



SITE PLAN (NOT TO SCALE)



0 1 2 3 4 5 METRES

Scale in metres. Indicative only. Dimensions are approximate. All information contained herein is gathered from sources we believe to be reliable. However we cannot guarantee its accuracy and interested persons should rely on their own inspection.

56 Alaine Place, Cecil Park

ONEAGENCY
ALEXOPOULOS PROPERTY